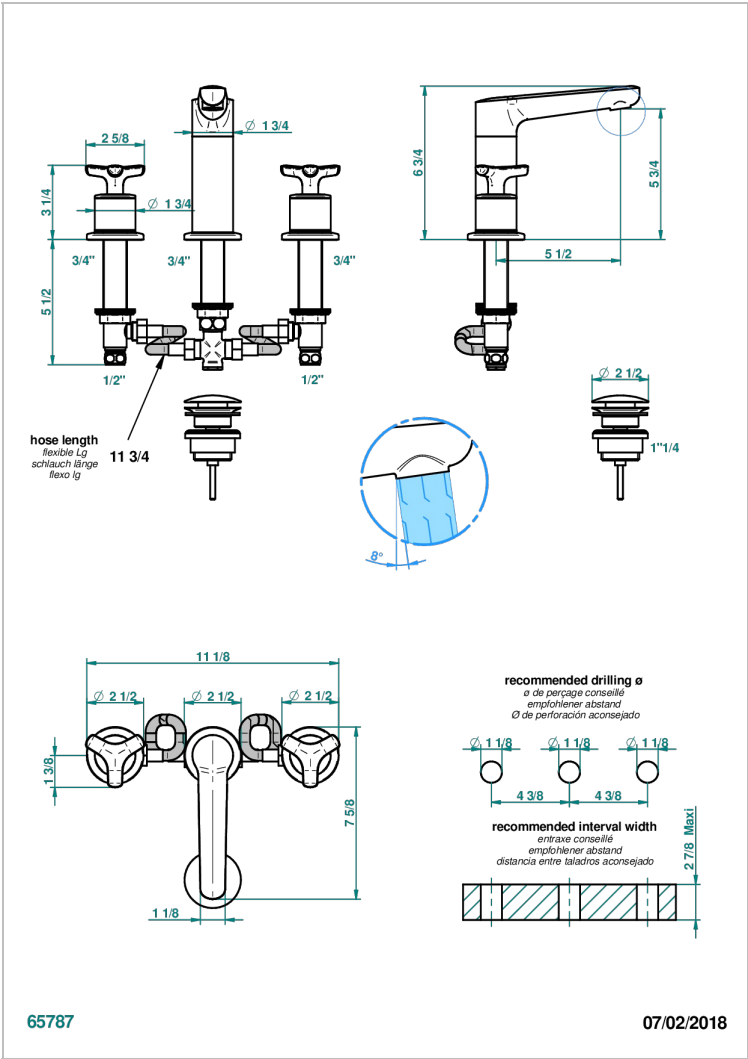


SYSTEM SMOOTH METAL

G9A-152M

3孔台盆龙头，带下水器，高喷嘴，大理石紧固件



特色

- ACS : 18ACCLY393
- NF : NF EN 200 - IA - Chrome
- SVGW-SSIGE : 1901-6813

标准



技术特征

- Recommandé : 3 bars (max. 5 bars) - Advised : 43,5 psi (max. 72 psi)
- 15 l/min à 3 bars (4 gpm at 43.5 psi)

可选饰面

Black ceram - D30	PVD哑光棕铜 - F34	PVD金色 - H52	哑光金 - F07	抛光镍 - B01
Blush PVD - H62	PVD哑光金 - H53	PVD镍 - H55	哑光铬 - C02	浅金 - F30
Graphite PVD - H64	PVD哑光铜 - H50	Polished chrome with gold inlay - GA1	哑光镍 - C01	漆面铜 - D01
Matt Umber PVD - H67	PVD哑光镍 - H56	Umber PVD - H66	复古镍 - H28	
Matt blush PVD - H60	PVD抛光铜 - H49	哑光复古铜 - H07	抛光金 (24K金) - F01	
Matt graphite PVD - H65	PVD棕铜 - F33	哑光浅金 - F31	抛光铬 - A02	