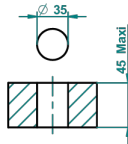


ø de perçage conseillé
recommended drilling ø
empfohlener Abstand
Ø de perforación aconsejado



65136

29/11/2017

CHARACTERISTIC

- ASME : ASME A112.18.1-2011/CSA B125.1-11

STANDARDS



AVAILABLE FINITIONS

Black ceram - D30	Copper antique matt, coated - H07	Matt Umber PVD - H67	Matt graphite PVD - H65	Nickel polished - B01
Blush PVD - H62	Gold color PVD - H52	Matt blush PVD - H60	Matt nickel (American satin) - C01	Soft gold - F30
Brass color PVD - H49	Gold mat - F07	Matt brass color PVD - H50	Matt nickel color PVD - H56	Soft matt gold - F31
Brown bronze color PVD - F33	Gold polished - F01	Matt brown bronze color PVD - F34	Natural smoked Brass - A13	Umber PVD - H66
Chrome polished - A02	Graphite PVD - H64	Matt chrome (American satin) - C02	Nickel antique / Sovereign - H28	
Chrome polished / gold polished - G02	Light coated bronze - D01	Matt gold color PVD - H53	Nickel color PVD - H55	