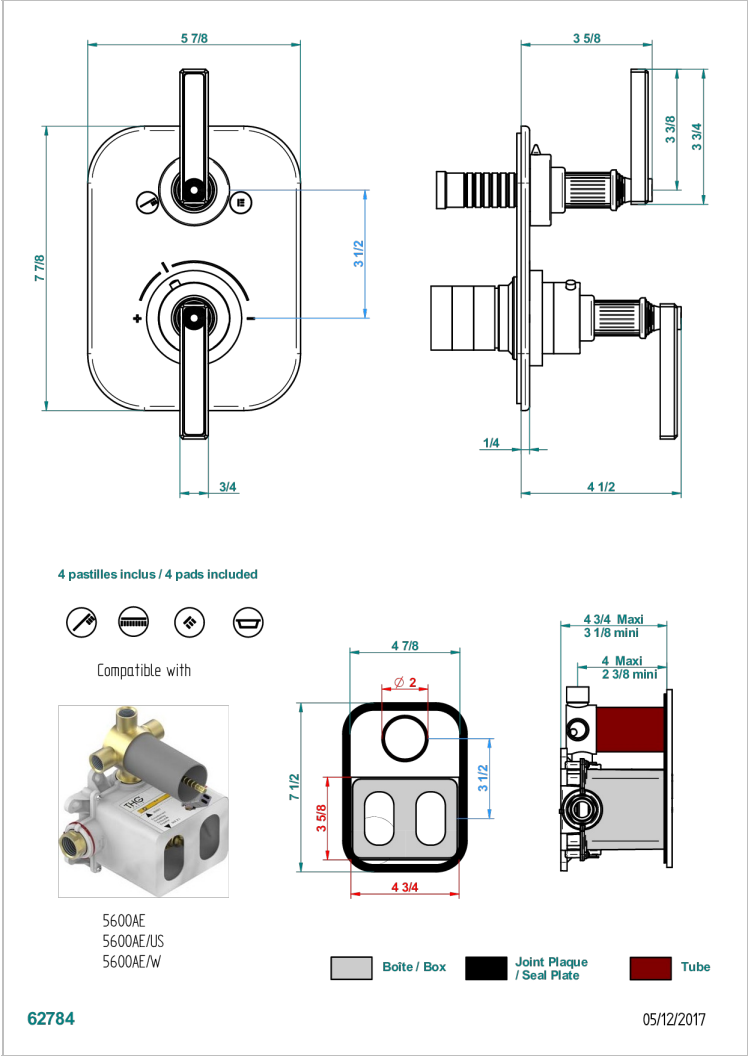
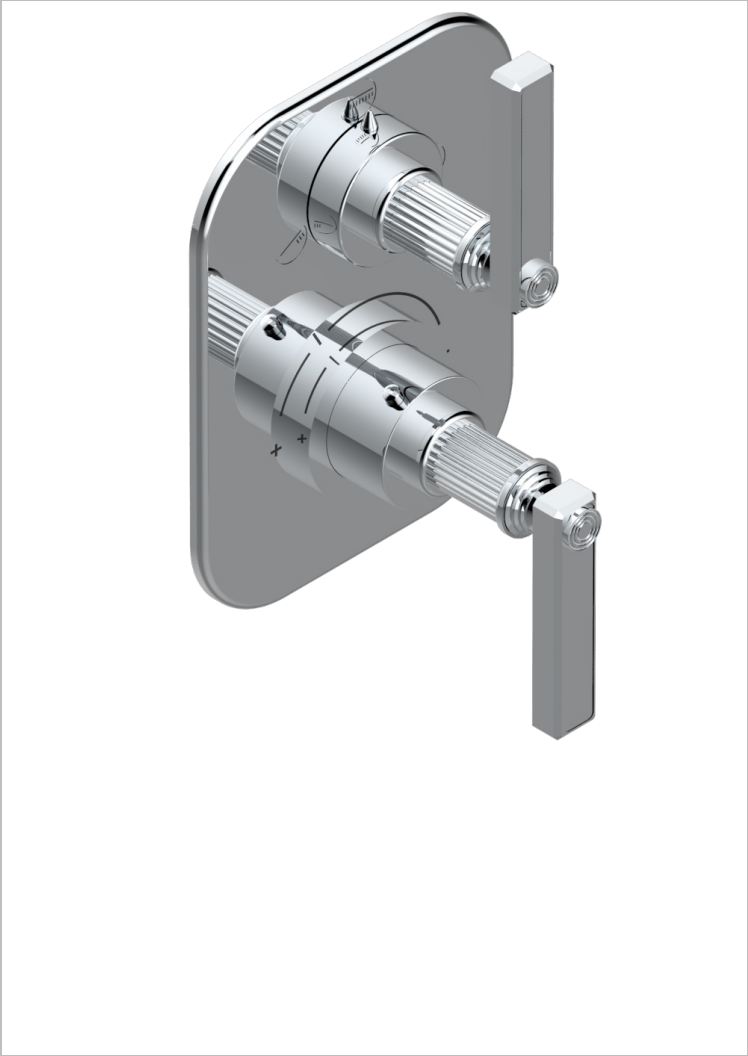


# GRAND CENTRAL METAL WITH LEVER

U9L-5600BE



Trim for THG thermostat with stop valve and 3 way diverter,- ref. 5 600AE with box for rough parts



## CHARACTERISTIC

- Built-in thermostatic cover for 5600AE - 5600AE/US - 5600AE/W with 3 no.1/2" outputs (stop function between each position)
- Requires concealed thermostat Ref 5600AE - 5600AE/US - 5600AE/W
- For Shower 3 functions - non simultaneous -
- Temperature control knob with security stop at 38°C
- Solid brass plate and knob
- ASME : ASME A112.18.1-2011/CSA B125.1-11
- DVGW : DW-6512CQ0608

## STANDARDS



## RELATED SKU'S

- Ref. G00-5100G Reinforced stop ring for THG thermostatic with fixing set
- Ref. G00-5600AE 3/4" THG thermostat with wax cartridge, with stop valve and 3 outlets (stop position between outlets), delivered with a built-in box, no trim

## AVAILABLE FINITIONS

Antique nickel - H28	Graphite PVD - H64	Matt chrome - C02	Natural smoked Brass - A13	Soft gold - F30
Black ceram - D30	Lacquered light bronze - D01	Matt gold - F07	Nickel color PVD - H55	Soft matt gold - F31
Blush PVD - H62	Matt Umber PVD - H67	Matt gold color PVD - H53	Polished chrome (color finish) - A02	Umber PVD - H66
Brass color PVD - H49	Matt blush PVD - H60	Matt graphite PVD - H65	Polished chrome with gold inlay - GA1	Varnished matt antique red copper (color finish) - H07
Brown bronze color PVD - F33	Matt brass color PVD - H50	Matt nickel (color finish) - C01	Polished gold (color finish) - F01	
Gold color PVD - H52	Matt brown bronze color PVD - F34	Matt nickel color PVD - H56	Polished nickel - B01	