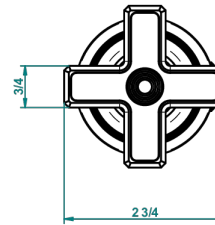
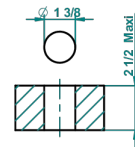


recommended drilling ø  
 ø de perçage conseillé  
 empfohlener abstand  
 Ø de perforación aconsejado



59867

28/11/2016

### CHARACTERISTIC

- West Coast Metal
- 1/2" deck valve with trim for lavatory

### AVAILABLE FINITIONS

Black ceram - D30  
 Blush PVD - H62  
 Brass color PVD - H49  
 Brown bronze color PVD - F33  
 Chrome polished - A02  
 Copper antique matt, coated - H07

Gold color PVD - H52  
 Gold mat - F07  
 Gold polished - F01  
 Graphite PVD - H64  
 Light coated bronze - D01  
 Matt Umber PVD - H67

Matt blush PVD - H60  
 Matt brass color PVD - H50  
 Matt brown bronze color PVD - F34  
 Matt chrome (American satin) - C02  
 Matt gold color PVD - H53  
 Matt graphite PVD - H65

Matt nickel (American satin) - C01  
 Matt nickel color PVD - H56  
 Natural smoked Brass - A13  
 Nickel antique / Sovereign - H28  
 Nickel color PVD - H55  
 Nickel polished - B01

Polished chrome with gold inlay - GA1  
 Soft gold - F30  
 Soft matt gold - F31  
 Umber PVD - H66