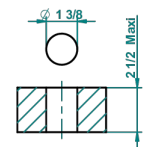


recommended drilling ø  
ø de perçage conseillé  
empfohlener abstand  
Ø de perforación aconsejado



59816

28/11/2016

## CHARACTERISTIC

- West Coast Metal
- Rim mounted 3/4" valve

## AVAILABLE FINITIONS

- |                              |                                   |                                  |                                       |  |
|------------------------------|-----------------------------------|----------------------------------|---------------------------------------|--|
| Antique nickel - H28         | Graphite PVD - H64                | Matt chrome - C02                | Natural smoked Brass - A13            | Soft gold - F30  |
| Black ceram - D30            | Lacquered light bronze - D01      | Matt gold - F07                  | Nickel color PVD - H55                | Soft matt gold - F31                                   |
| Blush PVD - H62              | Matt Umber PVD - H67              | Matt gold color PVD - H53        | Polished chrome (color finish) - A02  | Umber PVD - H66  |
| Brass color PVD - H49        | Matt blush PVD - H60              | Matt graphite PVD - H65          | Polished chrome with gold inlay - GA1 | Varnished matt antique red copper (color finish) - H07 |
| Brown bronze color PVD - F33 | Matt brass color PVD - H50        | Matt nickel (color finish) - C01 | Polished gold (color finish) - F01    |  |
| Gold color PVD - H52         | Matt brown bronze color PVD - F34 | Matt nickel color PVD - H56      | Polished nickel - B01                 |  |