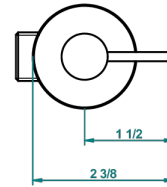
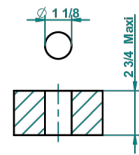


recommended drilling ø
ø de perçage conseillé
empfohlener abstand
Ø de perforación aconsejado



52728

18/07/2016

CHARACTERISTIC

- Anoa
- 1/2" deck valve with trim for lavatory - Cold

AVAILABLE FINITIONS

Black ceram - D30
 Chrome polished - A02
 Chrome polished / gold polished - G02
 Gold mat - F07
 Gold polished - F01
 Matt chrome (American satin) - C02

Matt nickel (American satin) - C01
 Nickel antique / Sovereign - H28
 Nickel polished - B01
 Soft gold - F30
 Soft matt gold - F31