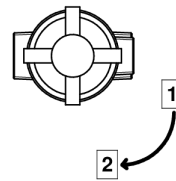
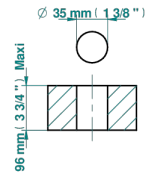


ø de perçage conseillé
recommended drilling ø
empfohlener abstand
Ø de perforación aconsejado



51915

04/04/2024

EIGENSCHAFTEN

- Nano
- 2-wege-umstellventil wanne/brause zur standmontage

VERFÜGBARE OBERFLÄCHEN

Altnickel - H28
Blassgold - F30
Blassgold matt unlackiert - F31
Chrom - A02
Chrom / gold - G02
Chrom matt - C02

Gold - F01
Gold matt - F07
Mattschwarz keramik - D30
Nickel matt - C01
Silbernickel - B01