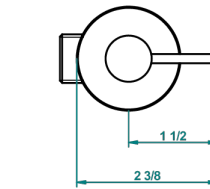
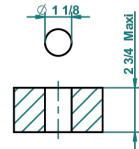


recommended drilling ϕ
 o de perçage conseillé
 empfilieren Abstand
 Ø de perforación aconsejado



51687

18/07/2016

EIGENSCHAFTEN

- Anoa
- Einbauventil zur Standmontage 1/2", Kalt

VERFÜGBARE OBERFLÄCHEN

Altnickel - H28
 Blassgold - F30
 Blassgold matt unlackiert - F31
 Chrom - A02
 Chrom / gold - G02
 Chrom matt - C02

Gold - F01
 Gold matt - F07
 Mattschwarz keramik - D30
 Nickel matt - C01
 Silbernichel - B01