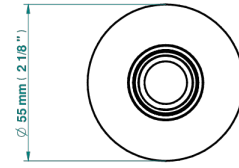
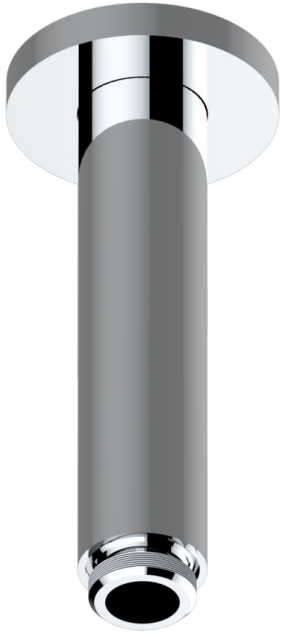


NANO CON MANETAS

G5B-82V/US

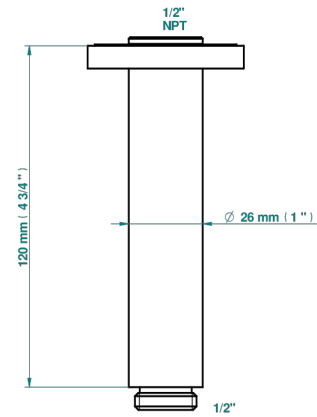
Vertical shower arm & flange ceiling mounted 1/2

THG[®]
PARIS



ø de perçage conseillé
recommended drilling ø
empfohlener Abstand
Ø de perforación aconsejado

ø 30 mm (1.18 ")



17725

10/01/2023

CARACTERÍSTICAS

- Nano con manetas
- Vertical shower arm & flange ceiling mounted 1/2

ACABADOS DISPONIBLES

Cerámica negra mate - D30
Cromo - A02
Cromo / dorado - G02
Cromo mate - C02
Dorado - F01
Dorado mate - F07

Dorado pálido - F30
Dorado pálido mate (sin barniz) - F31
Níquel - B01
Níquel mate - C01
Níquel viejo - H28