

# MARINA COLLECTION

Ref. A60 Marina onyx noir - A61 Marina métal

**THG**<sup>®</sup>  
PARIS



## CONTEMPORARY DESIGN INSPIRED BY THE SAILING WORLD

An ultra-flat straight spout, cross braces in two parts knotted like the ropes on a boat: each detail in this collection is a reference to its name and inspired by the sailing world.

A happy coincidence, this initial design by JCD Delepine seems ready made for THG Paris which is famous around the world for its yachting projects.

Available for basins, showers and baths, with a coordinated accessories line, Marina is available in a wide choice of finishes, including chrome, gold, soft gold, nickel, rhodium silver and rose gold.



## CONTEMPORARY STYLE

From its extensive choice of designs, THG Paris proposes collections in a contemporary style.

Straight, graphic or sometimes curved lines, THG Paris contemporary bathroom fittings are pure and understated, but always elegant.

The chrome and pink gold finishes are ideally suited to this style.

MARINA collection designed  
by **Studio THG Paris**

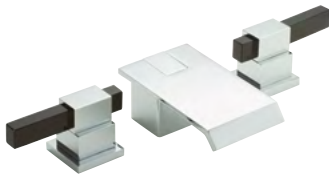
# MARINA COLLECTION

Ref. A60 Marina onyx noir - A61 Marina métal

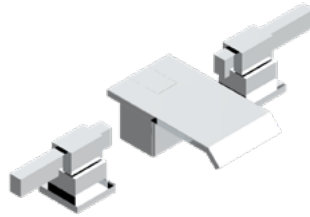
**THG**  
P A R I S

## MORE INFORMATION ON THE WHOLE COLLECTION

Available in 16 colors



**A60.151**  
Rim mounted 3-hole basin mixer



**A61.151**  
Rim mounted 3-hole basin mixer



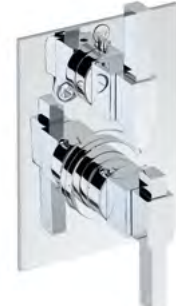
**A60.22NIA/A + 2 x A60.30**  
Mélangeur de bain mural



**A60.5500BE**  
Trimmings for thermostat



**A61.54**  
Wall mounted handshower set



**A61.5500BE**  
Trimmings for thermostat



**A60.5100B**  
Trimmings for thermostat



**A61.504N**  
Single towel ring



**A61.5100B**  
Trimmings for thermostat