

CORVAIR COLLECTION

by THG Paris & Martin Kemp Design

THG[®]
PARIS



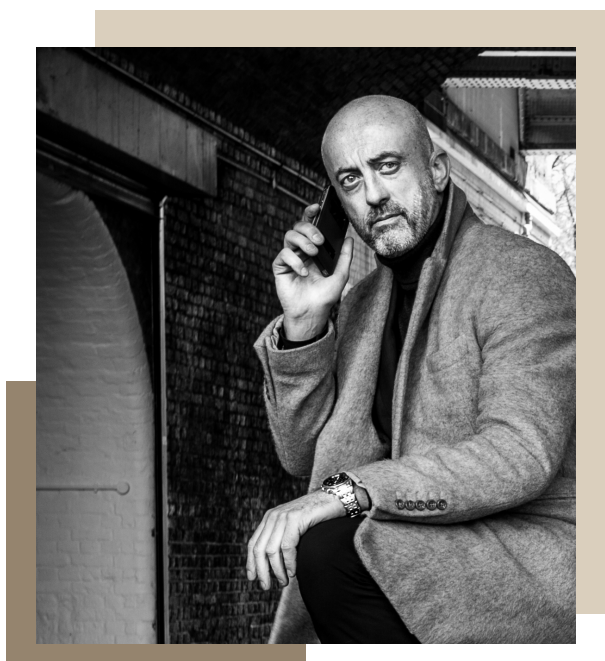
An invitation on a journey! With levers or cross handles, the Corvair collection is timeless and has been designed to impose elegance everywhere, whatever the bathroom project.

*« This collection is a lucid dream of the sumptuous forms and emotive detailing synonymous with the elegance of Voyage. »
Martin Kemp*

MARTIN KEMP DESIGN

The renowned London studio Martin Kemp Design produces some of the world's best interior designs for residences, yachts, jets and interior furniture. Martin has built up an international premium clientele after a distinguished career in Los Angeles with Barbara Barry and then at Candy & Candy in London.

Martin and his team travel the world regularly, absorbing culture and style with aplomb, often using these stimuli in their work.



CORVAIR COLLECTION

THG[®]
P A R I S



CORVAIR METAL
U8D Metal / U8E Metal - levers



CORVAIR HOWLITE
U8F Howlite / U8G Howlite - levers



CORVAIR PORTORO
U8H Portoro / U8J Portoro - levers



CORVAIR FIOR DI BOSCO
U8K Fior di Bosco / U8G Fior di Bosco - levers



U8F.151.F30
Basin mixer



B11.B531.AS2
Free standing bathtub



U8E.40SGB.H60
Wall basin mixer



U8E.1132SG.H66
Rim mounted bath mixer and handshower set



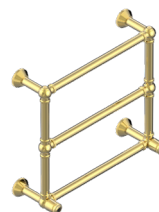
U8D.5401BEH.H65
Trim for thermostat



U8D.5500BE.B01
Trim for thermostat



U8D.520.H65
Single towel rail



U8H.TWK3H2.F30
Towel warmer, 3 bars, hydronic



U8D.517.HH60
Robe hook



U8D.638.F30
Pair of handles

Available finishes:

A02 - B01 - C01 - H03 - H62 - H60 - F30 - F31 - F01 - F07 - D01 - D05
H65 - H55 - H56 - H66 - H67 - H52 - H53 - H49 - H50 - F33 - F34